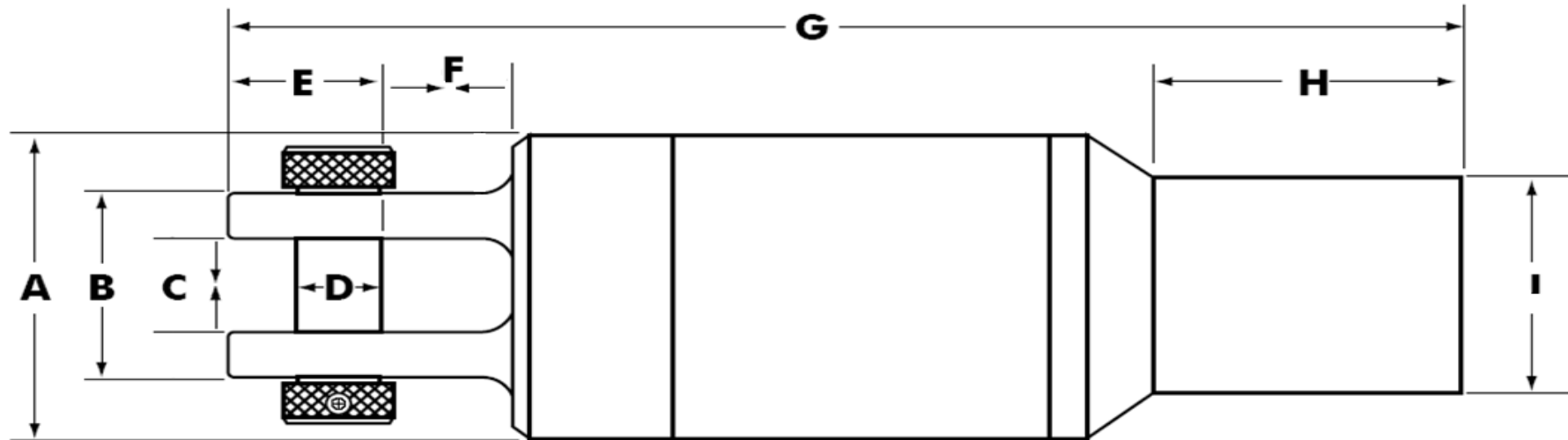


DCD® DUB-SWIVEL®



Part Number	5:1 Safe Working Load	Ultimate Load	API Thread	Weight	A (OD)	B	C (Between Clevis)	D (Pin)	E	F	G (Length)	H (Box Length)	I (Box O.D.)
00508-210	20,000 lb	100,000 lb	Clevis	27 lb	3 3/4"	2 3/4"	1 1/2"	1"	1 5/8"	1 1/16"	13 9/16"	N/A	N/A
00508-115C	30,000 lb	150,000 lb	2 3/8 IF Box	61 lb	4 3/4"	3 1/4"	1 3/4"	1 1/8"	2 7/16"	1 9/16"	17 7/8"	4 5/8"	3 3/8"
00508-120C	40,000 lb	200,000 lb	2 3/8 IF Box	79 lb	5 3/4"	3 1/2"	1 3/4"	1 3/8"	2 7/16"	1 9/16"	19 3/8"	4 5/8"	3 3/8"
00508-120D	40,000 lb	200,000 lb	2 7/8 IF Box	90 lb	5 3/4"	3 1/2"	1 3/4"	1 3/8"	2 7/16"	1 9/16"	19 1/2"	5 1/8"	4 1/8"
00508-230	60,000 lb	300,000 lb	Clevis	85 lb	6"	3 1/2"	1 3/4"	1 3/8"	2 1/2"	1 9/16"	18 1/2"	N/A	N/A
00508-130D	60,000 lb	300,000 lb	2 7/8 IF Box	94 lb	6"	3 1/2"	1 3/4"	1 3/8"	2 7/16"	1 9/16"	19 1/2"	5 1/8"	4 1/8"
00503-730-27M	60,000 lb	300,000 lb	2 7/8 IF Pin	87 lb	6"	3 1/2"	1 3/4"	1 3/8"	2 7/16"	1 9/16"	19 1/8"	N/A	N/A
00508-130E	60,000 lb	300,000 lb	3 1/2 IF Box	90 lb	6"	3 1/2"	1 3/4"	1 3/8"	2 7/16"	1 9/16"	20"	5 5/8"	4 3/4"
00508-240	80,000 lb	400,000 lb	Clevis	150 lb	6 1/2"	4 5/8"	2 1/8"	1 3/4"	3 1/4"	2 1/4"	24 11/16"	N/A	N/A
00508-140E	80,000 lb	400,000 lb	3 1/2 IF Box	144 lb	6 1/2"	4 5/8"	2 1/8"	1 3/4"	3 1/4"	2"	24 7/8"	5 5/8"	4 3/4"
00508-140F	80,000 lb	400,000 lb	4 1/2 IF Box	168 lb	6 1/2"	4 5/8"	2 1/8"	1 3/4"	3 1/4"	2"	26"	6 1/8"	6 1/2"
00503-745-27M	90,000 lb	270,000 lb	2 7/8 IF Pin	100 lb	6"	3 1/2"	1 3/4"	1 3/8"	2 1/2"	1 7/16"	20 3/4"	N/A	N/A
00508-260	120,000 lb	600,000 lb	Clevis	250 lb	7 1/2"	5 1/2"	2 3/4"	2 1/8"	3 9/16"	2 1/4"	28 1/2"	N/A	N/A
00508-160F	120,000 lb	600,000 lb	4 1/2 IF Box	257 lb	7 1/2"	5 1/2"	2 3/4"	2 1/8"	3 9/16"	2 3/16"	30 7/8"	6 1/8"	6 1/2"
00506-180F	160,000 lb	800,000 lb	4 1/2 IF Box	368 lb	9"	6"	3 1/4"	2 1/2"	4 13/16"	2 13/16"	32 5/8"	6 1/8"	6 5/8"

*** Information are provided by DCD Design.